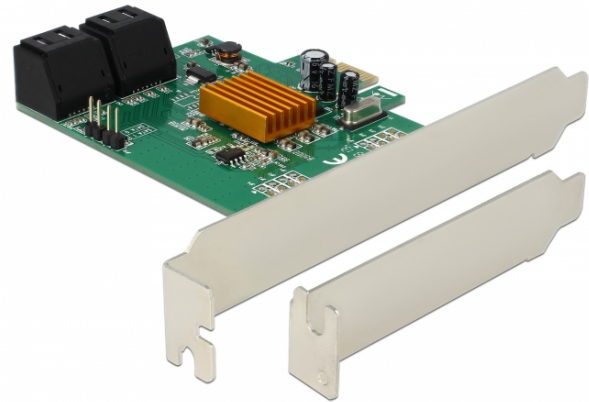


Delock 4 port SATA PCI Express Card

Description

The PCI Express card by Delock expands a PC by four internal SATA ports. Different devices such as SSDs, hard drives, DVD-drives etc. can be connected to the card.



Specification

- Connectors:
 - 4 x SATA 6 Gb/s 7 pin plug
 - 1 x PCI Express x1, V2.0
 - 2 x 2 pin pin header for LED
- Chipset: Marvell 88SE9215
- Supports Native Command Queuing (NCQ)
- Supports S.M.A.R.T.
- Supports TRIM
- Supports DevSleep
- Hot Swap
- Bootable

System requirements

- Linux Kernel 3.3 or above
- Windows 7/7-64/8.1/8.1-64/10/10-64
- PC with one free PCI Express slot

Package content

- PCI Express card
- Low profile bracket
- LED cable
- Driver CD
- User manual

Item no. 90382

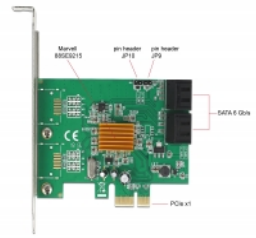
EAN: 4043619903825

Country of origin: China

Package: Retail Box



Images



General

Supported operating system:

- Windows 7 32-bit
- Windows 7 64-bit
- Windows 8.1 32-bit
- Windows 8.1 64-bit
- Windows 10 32-bit
- Windows 10 64-bit
- Linux Kernel 3.3 or above

Interface

Internal:

- 1 x PCI Express x1, V2.0
- 4 x SATA 6 Gb/s 7 pin plug

Technical characteristics

Chipset: Marvell 88SE9215

Physical characteristics

Slot bracket:

- low profile
- standard